



# GAT MONTHLY MEMBERSHIP PROGRESS REPORT

Results as of: 2/28/2023

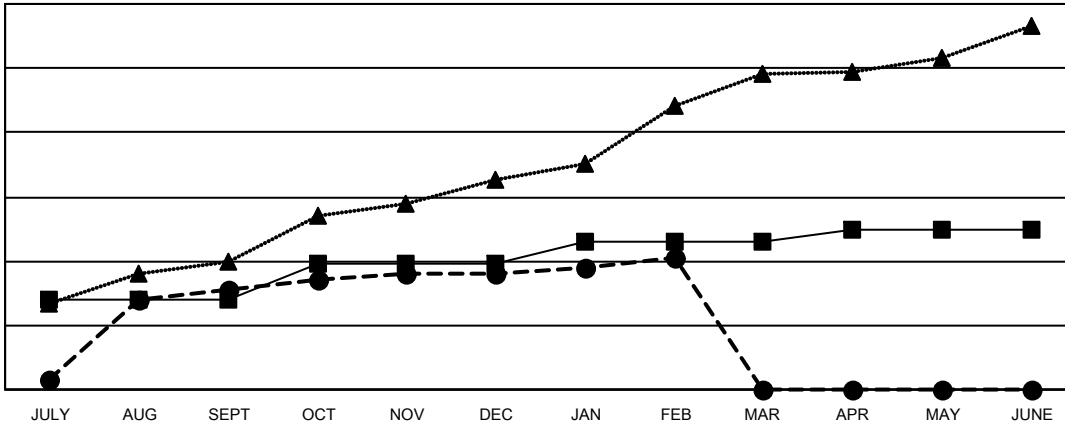
Multiple District 320

LOCATION: INDIA

Clubs			
RESULTS FOR 2022-2023			
QUARTER	NEW CLUB GOAL	NEW CLUBS	DROPPED CLUBS
JULY/AUG/SEPT	28	31	32
OCT/NOV/DEC	11	5	35
JAN/FEB/MAR	7	5	13
APR/MAY/JUNE	4	0	0

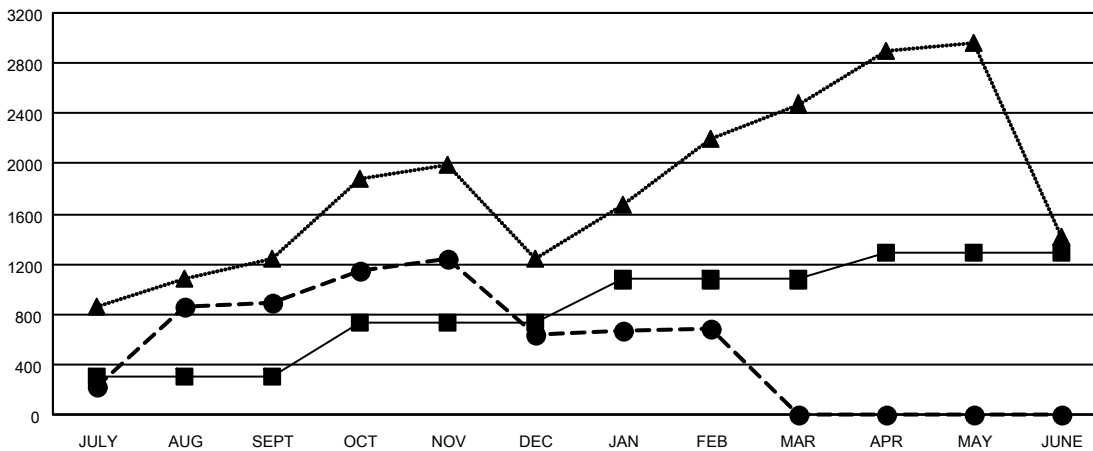
Members			
RESULTS FOR 2022-2023			
QUARTER	MEMBER GROWTH NET GOAL	MEMBER GROWTH ACTUAL	DROPPED MEMBERS ACTUAL (including transfers)
JULY/AUG/SEPT	305	1,607	608
OCT/NOV/DEC	430	1,179	1,387
JAN/FEB/MAR	340	411	302
APR/MAY/JUNE	210	0	0

GOALS AND ACTUAL NEW CLUBS CUMULATIVE



- - CURRENT YEAR GOALS FOR NEW CLUBS
- - CURRENT YEAR ACTUAL NEW CLUBS
- ▲ - LAST YEAR ACTUAL NEW CLUBS

GOALS AND ACTUAL MEMBERS CUMULATIVE



- - MEMBER GROWTH NET GOAL
- - MEMBER GROWTH ACTUAL
- ▲ - LAST YEAR MEMBERSHIP ACTUAL

<b>DROPPED CLUBS: 79</b>	<b>345 CLUBS OF 685 ADDED 1 OR MORE NEW MEMBERS</b>	<b>GENDER DISTRIBUTION</b>
<b>DROPPED MEMBERS</b>	<a href="#">CLICK HERE FOR CUMULATIVE MEMBERSHIP DATA</a>	MALE 15,770 (72.78%)
DECEASED 44		FEMALE 5,896 (27.21%)
CLUB CANCELLED 571		NON BINARY 1 (0.00%)
OTHER 1,682		PREFER NOT TO ANSWER 1 (0.00%)
<b>TOTAL 2,297</b>		<b>TOTAL FAMILY UNIT MEMBERS 11,354</b>
		<b>FAMILY MEMBERS PAYING HALF DUES 6,614</b>